

Lindale High School Band

Steven Moore, Susan Scott & Weston Fisher, Directors

P.O. Box 370
920 East Hubbard
Lindale, Texas 75771
USA

Phone 903-881-4140

Fax 903-881-4141

Dear Directors,

Welcome to Lindale Eagle Stadium for the UIL Area C 2A / 4A Open Class Marching Band Contest on Saturday, December 5, 2020. Attached you will find maps to help you with the logistics of your contest day.

Special note regarding maps and spectator parking. The three google maps do not show the stadium renovations and layout as it exists today. Please refer to the stadium map drawing for the most up to date layout. Make sure your parents are aware of spectator parking and directions on getting to visitor side for spectator overflow parking. Spectator parking is limited on the home side and will fill up fast.

There is a \$5 entry fee to the Area Contest.

As you arrive at the contest, please help by following these procedures:

1. Have your buses enter Eagle Stadium at the second entrance (see map) to the home side parking lot and park in the dedicated bus parking area. I will have parking attendants there to help. Dressing rooms and restrooms are available just inside the stadium entrance. **Please send several chaperones with your students and remain with them while they are changing, etc. Check the restrooms after they leave. Please monitor your students.** If the restrooms need attention, please call me and let me know.
2. Equipment trucks/trailers loading and unloading will be at East End of the Stadium. You can enter at the corner of W North and W Boyd Street. Parking in this area is limited so after you perform, you will need to load your equipment and move your trucks to parallel park on Bell Street (see the map). **Trucks and Trailers that only carry band instruments can be stationed by your buses in the main parking lot.**
3. A student worker will meet you in the bus parking area and will inform the contest office that you have arrived. This student worker can also take any forms or anything else you need to turn in to the contest office for you. Also, you will be informed of the time that you will need to begin moving to warm-up.
4. A student worker will escort you to your warm-up area. The warm-up areas are in the parking lots of the Church of Christ (A) and College Street Elementary (B). Please stress the importance of keeping this area quiet and to not disturb bands that are already warming up. Please be sure all warming-up is done facing away from the stadium. Please ask percussion to play softer than usual, as that particular sound will carry into the stadium. We will have two front ensemble warm up areas marked A & B on the map. Your front ensemble warm up area will be the same as your band's.

5. You will have 30 minutes in the warm-up area (if you get there on time). This 30-minute schedule includes time for the preceding band to exit and for your band to enter the warm-up area. A student worker will inform you of the time that you will need to leave the warm-up area and move to the stadium. Please be thoughtful that the student workers are trying their best to follow the schedule as it is printed. If there is a timing issue, please call me immediately so that we, the adults, can solve the problem.
6. Upon the conclusion of your warm-up time, a student worker will escort you to the stadium. This must be done on time in order to keep the contest on schedule.
7. The announcer will attempt to read your script with clarity and accuracy. If you have any names/titles that might be out of the ordinary, please include a phonetical spelling of that name(s)/title(s) that will help the announcer's pronunciation. Re-submit your "script" to Mr. Bullock if necessary.
8. The field entrance is located by the locker rooms on the visitor side. There are two double gate entrances so you will have ample room to get your band, front ensemble and props onto the field.
9. Jeremy and George Strickland will be running the field crew so you will be in great hands.
10. When your band is finished performing, they will exit at the east end of the field and go up the stairs on the home side. This will drop them in the parking lot by your equipment trucks and trailers. A student worker will escort you back to your buses down the bus lane between the stadium and the elementary campus.

Directions to Lindale Stadium

Coming from I-20 and traveling north on Hwy 69

- Travel to Hwy 16 (it is the 5th stop light counting the one at Walmart as the first one) and turn left
- Go to the first stop sign and Equipment trucks can turn right on N College Street
- Go to North Street turn left
- The stadium will be straight ahead
- Buses will proceed straight on Hwy 16. The stadium is on the right just past the second stop sign.
- Follow parking instructions on the stadium map

Coming from Mineola and traveling South on Hwy 69

- Turn right at the first stop light which is Hwy 16
- Go to the first stop sign and Equipment trucks can turn right on N College Street
- Go to North Street and turn left
- The stadium will be straight ahead
- Buses will proceed straight on Hwy 16. The stadium is on the right just past the second stop sign
- Follow parking instructions on the stadium map

Coming off of Hwy 849

- Equipment trucks can take a right on Hwy 16 and then a left on N College Street (1st Stop Sign)
- Go to North Street and turn left (end of the rock wall by elementary school).
- The stadium will be straight ahead
- Buses can take a left at the stop sign and the stadium is on the right.
- Follow parking instructions on the stadium map

Coming from Van on Hwy 16 E

- Buses, the stadium on your left.
- Equipment trucks turn left on N College Street (second stop sign past the stadium)
- Go to North Street and turn left
- The stadium will be straight ahead
- Follow parking instructions on the stadium map

11. To get to the spectator overflow parking, your parents should take North College Street to Mallory Street and take a left, the stadium will be on the left a couple of blocks down Mallory.

12. Attached to your email will be two stadium maps and two route maps. If you have any questions, please do not hesitate to ask.

13. We are asking all bands to sit on the visitor side of the stadium after their performance and equipment has been put away. Bathrooms will be open on the visitor's side for them to use.

14. We will run a concession stand on the home side only.

15. We will be selling the official UIL Area Patch on the home side. Just look for our band booster both.

16. Pep Wear will be selling other contest related merchandise.

17. Handicapped parking is available on the home side by the stadium entrance and in front of the adjacent elementary school. See the enclosed stadium map (not the google map).

18. In the event of inclement weather, the contest will be moved to Lindale HS and our new indoor facility. It is a full 100 yards. 80 yards 10-yard line to 10-yard line with full field markings and two end zones. Warm ups will be in our large band hall and auxiliary gym. More details later if necessary. Please call if you have any questions (office – 903-881-4140, cell – 903-752-0390).

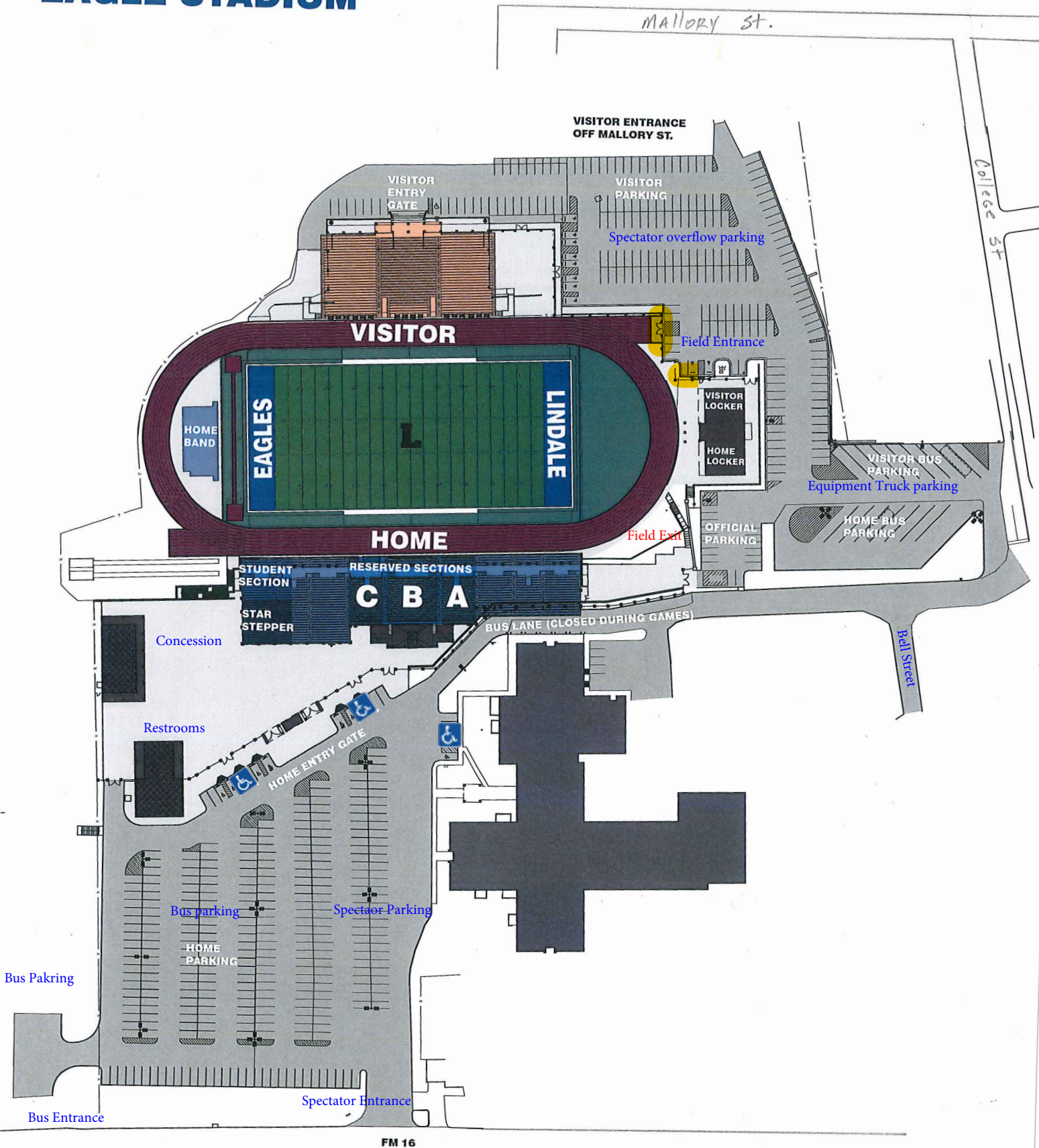
COVID-19 MITIGATION - UIL AREA C MARCHING CONTEST 2020

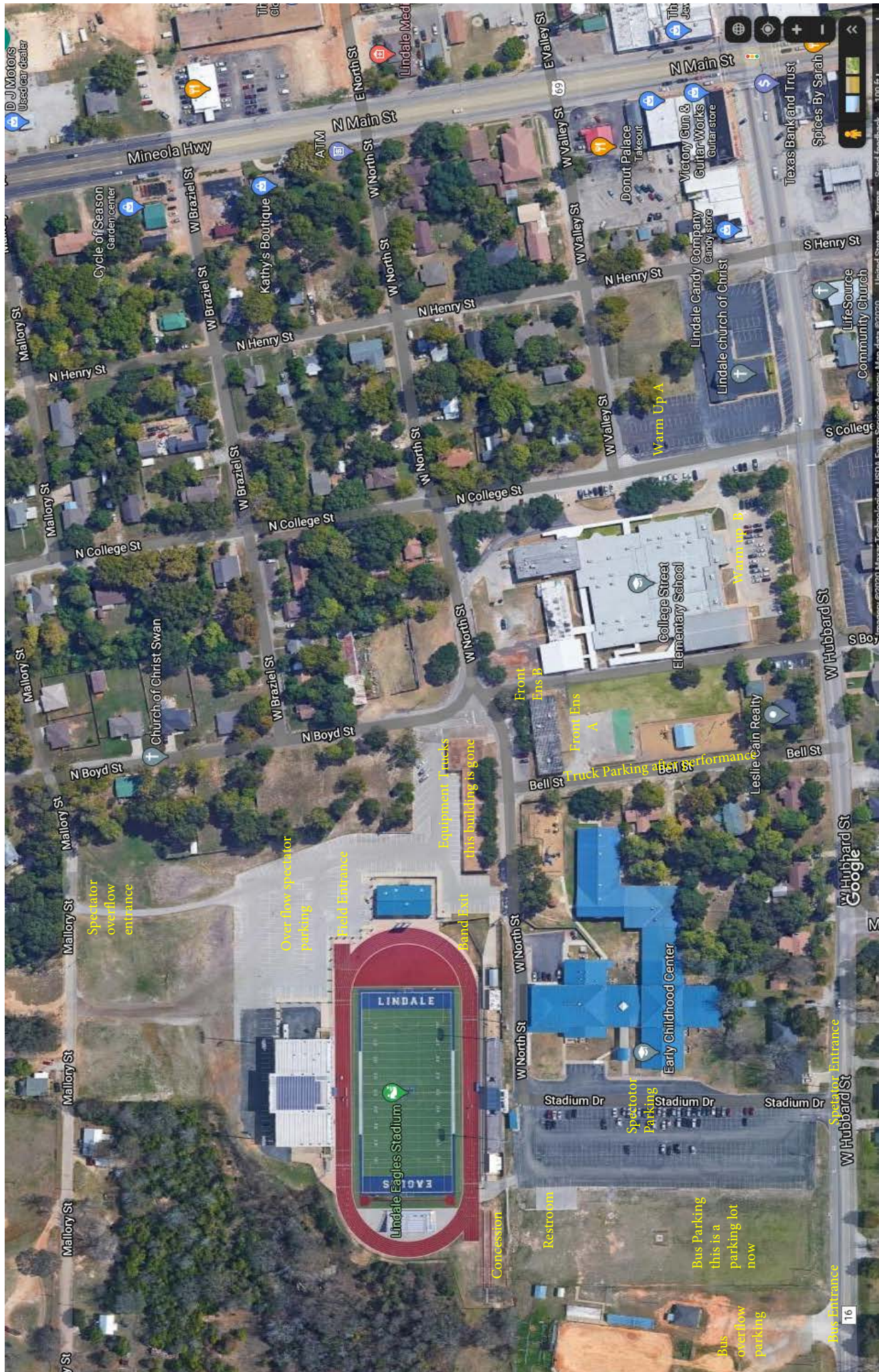
UIL Area C and our host ISD's ask for everyone's cooperation on the following:

1. Spectators exhibiting Covid-19 symptoms and/or have tested positive should not attend the contest.
2. After performance, bands should sit on the visitor side only. Please reserve all home side seating for spectators.
3. 2A bands and spectators must exit the stadium after their conference has finished.
4. Spectators 10 years and older entering the gate and stands are asked to wear a nose and mouth mask/face covering at all times.
5. Spectators are asked to socially distance themselves or their group 6 feet from other spectators.

Once again, we look forward to having you here in Lindale and best of luck at Contest.

EAGLE STADIUM







Route to warm-up Area A

1,481.03 ft

1,000.00 ft

500.00 ft

Lindale Eagles Stadium

Early Childhood Center

College Street Elementary School

Lindale church

N Henry St

W North St

W Valley St

N College St

N Boyd St

Bell St

Bell St

W North St

16

